



PhysicsByAaryan

TIFR Physics 2014

Complete TIFR GS Physics Paper · 2014 · 55 questions
Visit: physicsbyaaryan.com · physicspyq.com

Atomic and Molecular Physics

Q1. [TIFR_2014_C_Q50]

Year 2014 · Atomic and Molecular Physics · Effects in atomic physics · Only PhD · 5 marks

TIFR GS	2014	Section C
---------	------	-----------

The ground state electronic configuration for a carbon atom is

$$(1s)^2(2s)^2(2p)^2$$

The first excited state of this atom would be achieved by

- (a) transition of an electron from the $2s$ orbital to the $2p$ orbital.
- (b) transition of an electron from the $2p$ orbital to the $3s$ orbital.
- (c) transition of an electron from the $2s$ orbital to the $3s$ orbital.
- (d) re-alignment of the electron spins within the $2p$ orbital.

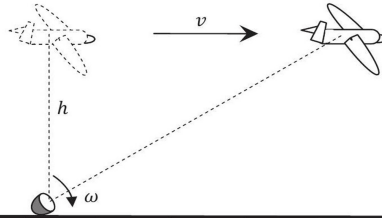
Classical Mechanics

Q2. [TIFR_2014_A_Q1]

Year 2014 · Classical Mechanics · Rotational Motion · Both int. phd and phd · 3 marks

TIFR GS	2014	Section A
---------	------	-----------

The directed beam from a small but powerful searchlight placed on the ground tracks a small plane flying horizontally at a fixed height h above the ground with a uniform velocity v , as shown in the figure below.



If the searchlight starts rotating with an instantaneous angular velocity ω_0 at time $t = 0$ when the plane was directly overhead, then at a later time t , its instantaneous angular velocity $\omega(t)$ is given by

- (a) $\frac{\omega_0}{1+\omega_0^2 t^2}$
 (b) $\omega_0 \exp(-\omega_0 t)$
 (c) $\frac{\omega_0}{1+\tan \omega_0 t}$
 (d) $\frac{\omega_0}{1-\omega_0 t + \frac{1}{2}\omega_0^2 t^2}$

Q3. [TIFR_2014_A_Q16]

Year 2014 · Classical Mechanics · Special Theory of Relativity · Both int. phd and phd · 3 marks

TIFR GS	2014	Section A
---------	------	-----------

In the laboratory frame, two observers A and B are moving along the sides of an equilateral triangle with equal speeds $c/2$, as shown in the figure.

The speed of B as measured by A will be

- (a) $\frac{\sqrt{3}}{2} c$
 (b) $\frac{4}{3\sqrt{3}} c$
 (c) $\frac{\sqrt{5}}{3} c$
 (d) $\frac{\sqrt{13}}{7} c$

Q4. [TIFR_2014_A_Q2]

Year 2014 · Classical Mechanics · Basic Mechanics · Both int. phd and phd · 3 marks

TIFR GS	2014	Section A
---------	------	-----------

The Conservation Principles for energy, linear momentum and angular momentum arise from the necessity that

- (a) the laws of physics should not involve infinite quantities.
- (b) internal forces on a body should cancel out, by Newton's (third) law of action and reaction.
- (c) the laws of physics should be independent of the state of rest or motion of the observer.
- (d) physical measurements should be independent of the origin and orientation of the coordinate system.

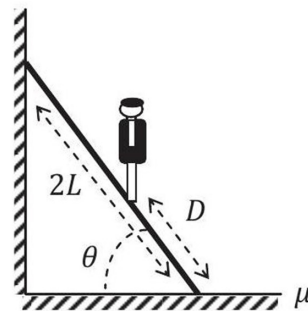
Q5. [TIFR_2014_A_Q3]

Year 2014 · Classical Mechanics · Rotational Motion · Both int. phd and phd · 3 marks

TIFR GS	2014	Section A
---------	------	-----------

A uniform ladder of length $2L$ and mass m leans against a wall in a vertical plane at an angle θ to the horizontal. The floor is rough, having a coefficient of static friction μ . A person of mass M stands on the ladder at a distance D from its base (see figure). If the wall is frictionless, the maximum distance (D_{\max}) up the ladder that the person can reach before the ladder slips is

- (a) $\mu L \tan \theta$
- (b) $2\mu L \frac{m}{M} \tan \theta$
- (c) $\left\{ 2\mu \left(1 + \frac{m}{M} \right) \tan \theta - \frac{m}{M} \right\} L$
- (d) $2\mu L \left(1 + \frac{m}{M} \right) \tan \theta$



Q6. [TIFR_2014_B_Q26]

Year 2014 · Classical Mechanics · Basic Mechanics · Only int. Phd · 5 marks

TIFR GS	2014	Section B
---------	------	-----------

A body of mass m falls from rest at a height h under gravity (acceleration due to gravity g) through a dense medium which provides a resistive force $F = -kv^2$, where k is a constant and v is the speed. It will hit the ground with a kinetic energy

- (a) $\frac{m^2 g}{2k} \exp\left(-\frac{2kh}{m}\right)$
 (b) $\frac{m^2 g}{2k} \tanh \frac{2kh}{m}$
 (c) $\frac{m^2 g}{2k} \left\{1 - \exp\left(-\frac{2kh}{m}\right)\right\}$
 (d) $\frac{m^2 g}{2k} \left\{1 + \exp\left(-\frac{2kh}{m}\right)\right\}$

Q7. [TIFR_2014_B_Q27]

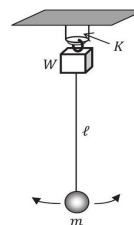
Year 2014 · Classical Mechanics · Oscillations · Only int. Phd · 5 marks

TIFR GS	2014	Section B
---------	------	-----------

A weight W is suspended from a rigid support by a hard spring with stiffness constant K . The spring is enclosed in a hard plastic sleeve, which prevents horizontal motion, but allows vertical oscillations (see figure). A simple pendulum of length ℓ with a bob of mass m ($mg \ll W$) is suspended from the weight W and is set oscillating in a horizontal line with a small amplitude. After some time has passed, the weight W is observed to be oscillating up and down with a large amplitude (but not hitting the sleeve).

It follows that the stiffness constant K must be

- (a) $K = \frac{W}{2\ell}$
 (b) $K = \frac{2W}{\ell}$
 (c) $K = \frac{4W}{\ell}$
 (d) $K = \frac{W}{\ell}$



Q8. [TIFR_2014_B_Q40]

Year 2014 · Classical Mechanics · Special Theory of Relativity · Only int. Phd · 5 marks

TIFR GS	2014	Section B
---------	------	-----------

Cosmic ray muons generated at the top of the Earth's atmosphere decay according to the radioactive decay law

$$N(t) = N(0)\exp\left(-\frac{0.693t}{T_{1/2}}\right)$$

where $N(t)$ is the number of muons at time t , and $T_{1/2} = 1.52\mu\text{ s}$ is the proper half-life of the muon. Immediately after generation, most of these muons shoot down towards the Earth's surface. Some of these muons decay on the way, but their interaction with the atmosphere is negligible. An observer on the top of a mountain of height 2.0 km above mean sea level detects muons with the speed $0.98c$ over a period of time and counts 1000 muons. The number of muons of the same speed detected by an observer at mean sea level in the same period of time would be

- (a) 539
- (b) 983
- (c) 839
- (d) 232

Q9. [TIFR_2014_C_Q43]

Year 2014 · Classical Mechanics · Pseudo Forces · Only PhD · 5 marks

TIFR GS	2014	Section C
---------	------	-----------

Assume that the Earth is a uniform sphere of radius R , rotating about its axis with a uniform angular velocity ω . A rocket is launched from the Equator in a direction due North. If it keeps on flying at a uniform speed v (neglecting air resistance), the highest latitude that can be achieved is

- (a) $\frac{\pi}{2} - (\pi - 2) \frac{\omega R}{v}$
- (b) $\frac{\pi}{2} \left(1 - \frac{2\omega R}{v}\right)$
- (c) $\frac{\pi}{2} - (\pi + 2) \frac{\omega R}{v}$
- (d) $\frac{\pi}{2}$

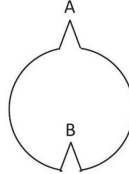
Electromagnetism

Q10. [TIFR_2014_A_Q7]

Year 2014 · Electromagnetism · Electrostatics · Both int. phd and phd · 3 marks

TIFR GS	2014	Section A
---------	------	-----------

A solid spherical conductor has a conical hole made at one end, ending in a point B, and a small conical projection of the same shape and size at the opposite side, ending in a point A. A cross-section through the centre of the conductor is shown in the figure on the right.



If, now, a positive charge Q is transferred to the sphere, then

- the charge density at A will be more than the charge density at B.
- the charge density at B will be more than the charge density at A.
- the charge density at A will be the same as the charge density at B.
- the charge density at both A and B will be undefined.

Q11. [TIFR_2014_A_Q8]

Year 2014 · Electromagnetism · Electrostatics · Both int. phd and phd · 3 marks

TIFR GS	2014	Section A
---------	------	-----------

Solving Poisson's equation $\nabla^2 \phi = -\rho_0/\epsilon_0$ for the electrostatic potential $\phi(\vec{x})$ in a region with a constant charge density ρ_0 , two students find different answers, viz.

$$\phi_1(\vec{x}) = -\frac{\rho_0 x^2}{2\epsilon_0} \quad \text{and} \quad \phi_2(\vec{x}) = -\frac{\rho_0 y^2}{2\epsilon_0}$$

The reason why these different solutions are both correct is because

- space is isotropic and hence x and y are physically equivalent.
- the boundary conditions are different in the two cases.
- we can add solutions of Laplace's equation to both $\phi_1(\vec{x})$ and $\phi_2(\vec{x})$.
- the electrostatic energy is infinite for a constant charge density.

Q12. [TIFR_2014_A_Q9]

Year 2014 · Electromagnetism · Magnetostatics · Both int. phd and phd · 3 marks

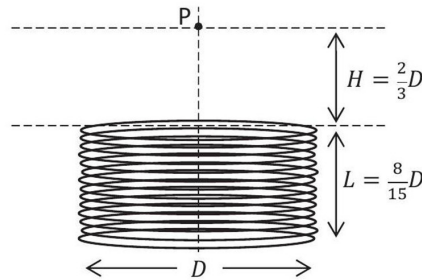
TIFR GS	2014	Section A
---------	------	-----------

A short solenoid with n turns per unit length has diameter D and length $L = 8D/15$, as shown in the figure, and it carries a constant current I .

The magnetic field B at a point P on the axis of the solenoid at a distance $H = 2D/3$ from its near end (see figure) is

[use $\int dx (1 + x^2)^{-3/2} = x(1 + x^2)^{-1/2}$]

- (a) $\frac{4}{13} \mu_0 n I$
 (b) $\frac{24}{15} \mu_0 n I$
 (c) $\frac{4}{65} \mu_0 n I$
 (d) $\frac{112}{65} \mu_0 n I$

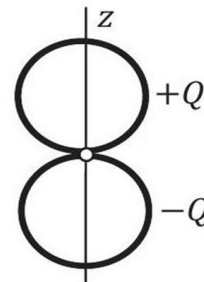
**Q13.** [TIFR_2014_B_Q29]

Year 2014 · Electromagnetism · Multipole Expansion · Only int. Phd · 5 marks

TIFR GS	2014	Section B
---------	------	-----------

An electric dipole is constructed by fixing two circular charged rings, each of radius a , with an insulating contact (see figure). One of these rings has total charge $+Q$ and the other has total charge $-Q$. If the charge is distributed uniformly along each ring, the dipole moment about the point of contact will be

- (a) $2Qa\hat{z}$
 (b) $\frac{Qa}{\pi} \hat{z}$
 (c) $4\pi Qa\hat{z}$
 (d) zero

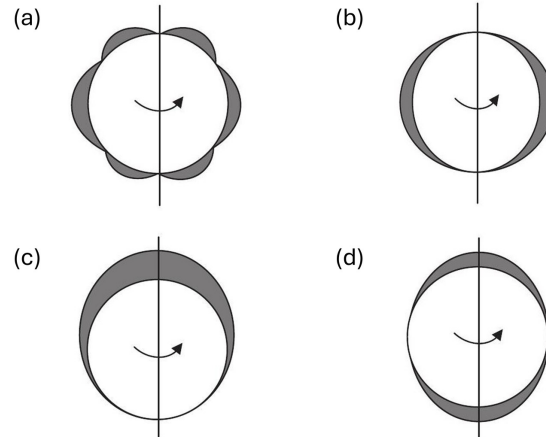


Q14. [TIFR_2014_B_Q30]

Year 2014 · Electromagnetism · Electrostatics · Only int. Phd · 5 marks

TIFR GS	2014	Section B
---------	------	-----------

A spherical conductor, carrying a total charge Q , spins uniformly and very rapidly about an axis coinciding with one of its diameters. In the diagrams given below, the equilibrium charge density on its surface is represented by the thickness of the shaded region. Which of these diagrams is correct?



Q15. [TIFR_2014_C_Q44]

Year 2014 · Electromagnetism · Electrostatics · Only PhD · 5 marks

TIFR GS	2014	Section C
---------	------	-----------

A particle P of mass m moves under the influence of a central potential, centred at the origin O, of the form

$$V(r) = -\frac{k}{3r^3}$$

where k is a positive constant



If the particle P comes in from infinity with initial velocity u and impact parameter b (see figure), then the largest value of b for which the particle gets captured by the potential is

- (a) $\left(\frac{2k^2}{m^2u^4}\right)^{1/6}$
- (b) $\left(\frac{k}{3mu}\right)^{1/3}$
- (c) $\left(\frac{3k^2}{m^2u^4}\right)^{1/6}$
- (d) $\left(\frac{2k}{3mu}\right)^{1/3}$

Q16. [TIFR_2014_C_Q45]

Year 2014 · Electromagnetism · Radiations · Only PhD · 5 marks

TIFR GS	2014	Section C
---------	------	-----------

The instantaneous electric and magnetic fields created at a distance r by a point source at the origin are given by

$$\vec{E} = \frac{A \cos \omega t}{2\pi \epsilon_0 r} \hat{\theta} \quad \vec{H} = \frac{B \cos \omega t}{\mu_0 r} \hat{\phi}$$

where ω, A, B are constants, and the unit vectors $(\hat{r}, \hat{\theta}, \hat{\phi})$ form an orthonormal set. The time-averaged power radiated by the source is

- (a) $\frac{\omega \epsilon_0}{\mu_0} AB$
- (b) $c^2 AB$
- (c) $\frac{c^3}{2\pi} AB$
- (d) $\frac{2\pi \omega}{c} AB$

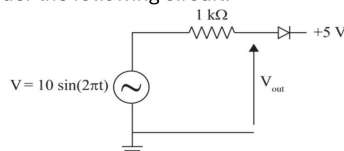
Electronics

Q17. [TIFR_2014_A_Q23]

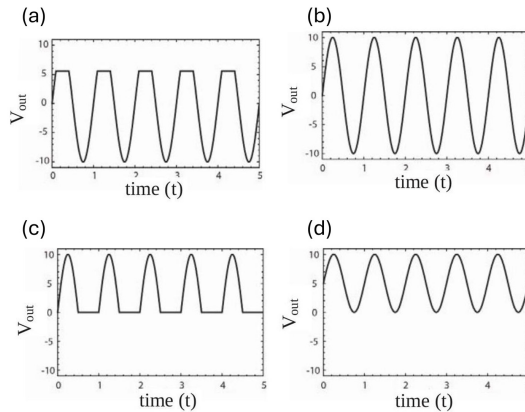
Year 2014 · Electronics · Diodes · Both int. phd and phd · 3 marks

TIFR GS	2014	Section A
---------	------	-----------

Consider the following circuit.



Which of the graphs given below is a correct representation of V_{out} ?



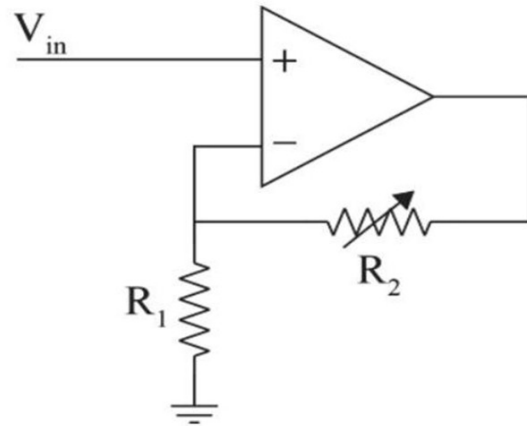
Q18. [TIFR_2014_A_Q24]

Year 2014 · Electronics · OPAMP · Both int. phd and phd · 3 marks

TIFR GS	2014	Section A
---------	------	-----------

In the following circuit, the resistance R_2 is doubled. It follows that the current through R_2

- (a) is halved.
- (b) is doubled.
- (c) is quadrupled.
- (d) remains the same.



Q19. [TIFR_2014_A_Q25]

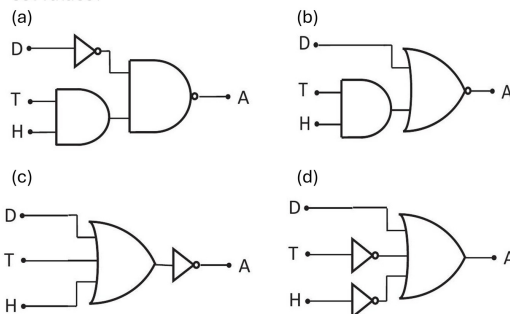
Year 2014 · Electronics · Logic Gates · Both int. phd and phd · 3 marks

TIFR GS	2014	Section B
---------	------	-----------

A control circuit needs to be designed to save on power consumption by an air-conditioning unit A in a windowless room with a single door. The room is fitted with the following devices:

1. a temperature sensor T , which is enabled ($T = 1$) whenever the temperature falls below a pre-set value;
2. a humidity sensor H , which is enabled ($H = 1$) whenever the humidity falls below a certain pre-set value;
3. a sensor D on the door, which is triggered ($D = 1$) whenever the door opens.

Which of the following logical circuits will turn the air-conditioning unit off ($A = 0$) whenever the door is opened or when both temperature and humidity are below their pre-set values?

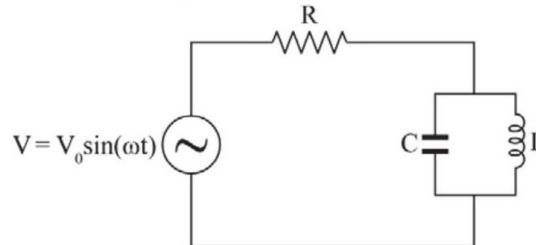


Q20. [TIFR_2014_B_Q38]

Year 2014 · Electronics · AC and DC Circuits · Only int. Phd · 5 marks

TIFR GS	2014	Section B
---------	------	-----------

In the following circuit, the AC source is an ideal voltage source. What is the amplitude of the steady state current through the inductor at resonance?



- (a) zero
- (b) V_0/R
- (c) $V_0 \sqrt{C/(R^2 C + 2L)}$
- (d) $V_0 \sqrt{C/L}$

Experimental Physics

Q21. [TIFR_2014_B_Q35]

Year 2014 · Experimental Physics · Experimental design · Only int. Phd · 5 marks

TIFR GS	2014	Section B
---------	------	-----------

In a low temperature experiment, the resistance of a sensor is used as a thermometer. In order to have better sensitivity in the range 100 mK to 1.0 K , which material would make the best sensor?

- (a) pure semiconductor
- (b) p-n junction
- (c) insulator
- (d) metal

Q22. [TIFR_2014_B_Q39]

Year 2014 · Experimental Physics · Experimental design · Only int. Phd · 5 marks

TIFR GS	2014	Section B
---------	------	-----------

A standard radioactive source is known to decay by emission of γ rays. The source is provided to a student in a thick sealed capsule of unbreakable plastic and she is asked to find out the half-life. Which of the following would be the most useful advice to the student?

- (a) Mount the source in front of a gamma ray detector and count the number of photons detected in one hour.
- (b) Mount the source in front of a gamma ray detector and count the number of photons detected in a specific time interval. Repeat this experiment at different times and note how the count changes.
- (c) Measure the mass of the source at different times with an accurate balance having a least count of 1 mg. Plot these values on a curve and fit it with an exponential decay law.
- (d) The half-life cannot be measured because the initial concentration of the source is not given.

Q23. [TIFR_2014_C_Q54]

Year 2014 · Experimental Physics · Experimental design · Only PhD · 5 marks

TIFR GS	2014	Section C
---------	------	-----------

A group of alien astronomers far away from the solar system tries to find out if the Sun (visible to them as a small yellow star) has planets orbiting around it. The method they use is to look for wobbles in the motion of the Sun induced by the planet(s) revolving around it (if any). To detect this motion, they build a high-resolution spectrometer which can measure the Doppler shift in frequency of a 600 nm line in the solar spectrum with an accuracy of 1 in 10^6 .

Given that the Sun has a mass 2×10^{30} kg and that Earth (mass 6×10^{24} kg, orbital velocity 3×10^4 ms⁻¹) and Jupiter (mass 2×10^{27} kg, orbital velocity 1.5×10^4 ms⁻¹) are two typical planets, one could predict that the experiments conducted by the aliens would find

- (a) no evidence for any planets orbiting the Sun.
- (b) evidence for the planet Jupiter, but not for the planet Earth.
- (c) evidence for both the planets Earth and Jupiter.
- (d) evidence for planets, but will not be able to tell how many.

Mathematical Physics

Q24. [TIFR_2014_A_Q4]

Year 2014 · Mathematical Physics · Matrices · Both int. phd and phd · 3 marks

TIFR GS	2014	Section A
---------	------	-----------

The product MN of two Hermitian matrices M and N is anti-Hermitian. It follows that

(a) $[M, N] = 0$

(b) $\{M, N\} = 0$

(c) $M^\dagger = N$

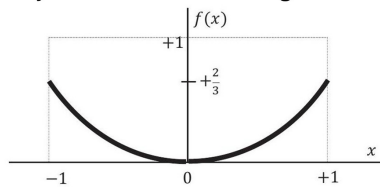
(d) $M^\dagger = N^{-1}$

Q25. [TIFR_2014_A_Q5]

Year 2014 · Mathematical Physics · Fourier and Laplace Analysis · Both int. phd and phd · 3 marks

TIFR GS	2014	Section A
---------	------	-----------

A student is asked to find a series approximation for the function $f(x)$ in the domain $-1 \leq x \leq +1$, as indicated by the thick line in the figure below.



The student represents the function by a sum of three terms

$$f(x) \approx a_0 + a_1 \cos \frac{\pi x}{2} + a_2 \sin \frac{\pi x}{2}$$

Which of the following would be the best choices for the coefficients a_0 , a_1 and a_2 ?

(a) $a_0 = -\frac{1}{3}, a_1 = 0, a_2 = -1$

(b) $a_0 = \frac{2}{3}, a_1 = 0, a_2 = -\frac{2}{3}$

(c) $a_0 = \frac{2}{3}, a_1 = -\frac{2}{3}, a_2 = 0$

(d) $a_0 = 1, a_1 = -\frac{1}{3}, a_2 = 0$

Q26. [TIFR_2014_A_Q6]

Year 2014 · Mathematical Physics · Probability · Both int. phd and phd · 3 marks

TIFR GS	2014	Section A
---------	------	-----------

The probability function for a variable x which assumes only positive values is

$$f(x) = x \exp\left(-\frac{x}{\lambda}\right)$$

where $\lambda > 0$. The ratio $\langle x \rangle / \hat{x}$, where \hat{x} is the most probable value and $\langle x \rangle$ is the mean value of the variable x , is

- (a) 1
- (b) $\frac{1}{\lambda}$
- (c) $\frac{1+\lambda}{1-\lambda}$
- (d) 2

Q27. [TIFR_2014_B_Q28]

Year 2014 · Mathematical Physics · Delta, Gamma, Beta and Integrals · Only int. Phd · 5 marks

TIFR GS	2014	Section B
---------	------	-----------

In spherical polar coordinates $\vec{r} = (r, \theta, \varphi)$ the delta function $\delta(\vec{r}_1 - \vec{r}_2)$ can be written as

- (a) $\frac{1}{r_1^2} \delta(r_1 - r_2) \delta(\cos \theta_1 - \cos \theta_2) \delta(\varphi_1 - \varphi_2)$
- (b) $\frac{1}{r_1^2 \cos \theta_1} \delta(r_1 - r_2) \delta(\theta_1 - \theta_2) \delta(\varphi_1 - \varphi_2)$
- (c) $\frac{1}{|\vec{r}_1 - \vec{r}_2|^2} \delta(r_1 - r_2) \delta(\cos \theta_1 - \cos \theta_2) \delta(\varphi_1 - \varphi_2)$
- (d) $\delta(r_1 - r_2) \delta(\theta_1 - \theta_2) \delta(\varphi_1 - \varphi_2)$

Q28. [TIFR_2014_C_Q41]

Year 2014 · Mathematical Physics · Complex Analysis · Only PhD · 5 marks

TIFR GS	2014	Section C
---------	------	-----------

The integral

$$\int_0^{\infty} \frac{dx}{4+x^4}$$

evaluates to

- (a) π
- (b) $\frac{\pi}{2}$
- (c) $\frac{\pi}{8}$
- (d) $\frac{\pi}{4}$

Q29. [TIFR_2014_C_Q42]

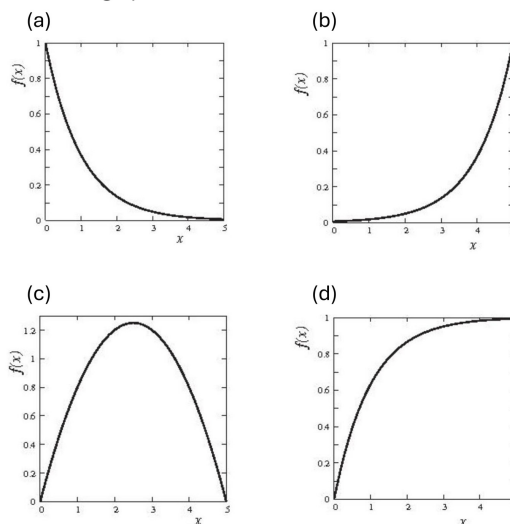
Year 2014 · Mathematical Physics · Differential Equations · Only PhD · 5 marks

TIFR GS	2014	Section C
---------	------	-----------

The solution of the integral equation

$$f(x) = x - \int_0^x dt f(t)$$

has the graphical form



Modern Physics

Q30. [TIFR_2014_A_Q20]

Year 2014 · Modern Physics · Light Matter interaction · Both int. phd and phd · 3 marks

TIFR GS	2014	Section A
---------	------	-----------

A beam of atoms moving in a certain direction can be slowed down if they absorb photons from a laser beam moving in the opposite direction and subsequently spontaneously emit photons isotropically. For a beam of Sodium atoms (mass number $A = 23$) with speed 600 ms^{-1} , if a laser beam of wavelength 589 nm is used, the number of such absorption and emission cycles needed to bring a Sodium atom to rest would be approximately

- (a) 2.1×10^4
- (b) 1.3×10^4
- (c) 2.1×10^3
- (d) 1.3×10^5

Nuclear and Particle Physics**Q31. [TIFR_2014_A_Q22]**

Year 2014 · Nuclear and Particle Physics · Radioactivity · Both int. phd and phd · 3 marks

TIFR GS	2014	Section A
---------	------	-----------

An alpha particle of energy E is shot towards a gold nucleus (${}_{79}^{197}\text{Au}$). At distances much larger than the nuclear size R_N , the dominant force is the Coulomb repulsion, but at distances comparable to the nuclear size the dominant force is the strong nuclear attraction. These combine to form a potential barrier of height V_C . If $E < V_C$, the probability that the alpha particle will fuse with the gold nucleus can be written (in terms of a dimensionless positive constant k) as

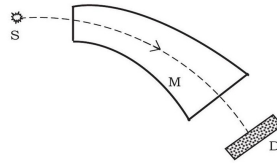
- (a) zero
- (b) $k \left(1 - \frac{E}{V_C}\right)$
- (c) $\exp\left(-\frac{kV_C}{E}\right)$
- (d) $\frac{kE}{\sqrt{k^2 E^2 + V_C^2}}$

Q32. [TIFR_2014_C_Q52]

Year 2014 · Nuclear and Particle Physics · Accelerator and Detectors · Only PhD · 5 marks

TIFR GS	2014	Section C
---------	------	-----------

In a beta decay experiment, an electromagnet M and a detector D are used to measure the energy of electrons (β^-), as shown in the figure.



The detector D is capable of detecting either electrons (β^-) or positrons (β^+). Now the β^- source is replaced with a β^+ source, and we would like to measure the energy of the positrons (β^+) using the same setup. Which of the following is correct?

- There is no way to do this with the given set up, since β^+ will have to be converted into β^- , which is obviously not possible.
- This can be done trivially, without changing anything, since the detector D can detect either β^- or β^+ .
- This can be done quite easily, if the polarity of current in the coils of the electromagnet is reversed.
- This cannot be done since the magnet does not have a symmetric shape.

Q33. [TIFR_2014_C_Q53]

Year 2014 · Nuclear and Particle Physics · Radioactivity · Only PhD · 5 marks

TIFR GS	2014	Section C
---------	------	-----------

It is well-known that the energy of the Sun arises from the fusion of hydrogen nuclei (protons) inside the core of the Sun. This takes place through several mechanisms, each resulting in emission of energy. Which of the following reactions is NOT possible during the proton fusion inside the Sun?

- ${}^1_1\text{H} + {}^1_1\text{H} \rightarrow {}^2_2\text{He}$
- ${}^1_1\text{H} + {}^1_1\text{H} + {}^1_1\text{H} + {}^1_1\text{H} \rightarrow {}^4_2\text{He} + 2e^+$
- ${}^2_1\text{H} + {}^1_1\text{H} \rightarrow {}^3_2\text{He}$
- ${}^1_1\text{H} + {}^1_1\text{H} \rightarrow {}^2_1\text{H} + e^+ + \nu_e$

Q34. [TIFR_2014_C_Q55]

Year 2014 · Nuclear and Particle Physics · Particle Physics · Only PhD · 5 marks

TIFR GS	2014	Section C
---------	------	-----------

The interaction strength of the recently-discovered Higgs boson (mass approximately $125\text{GeV}/c^2$) with any other elementary particle is proportional to the mass of that particle. Which of the following decay processes will have the greatest probability?

- (a) Higgs boson decaying to a neutrino-antineutrino pair.
- (b) Higgs boson decaying to an electron and a positron.
- (c) Higgs boson decaying to a bottom quark + a bottom anti-quark.
- (d) Higgs boson decaying to a top quark + a top anti-quark.

Optics**Q35. [TIFR_2014_A_Q17]**

Year 2014 · Optics · Ray Optics · Both int. phd and phd · 3 marks

TIFR GS	2014	Section A
---------	------	-----------

Two telescopes X and Y have identical objective lenses, but the single-lens eyepiece of X is converging whereas the single-lens eyepiece of Y is diverging. If the magnification M of these two telescopes for objects at infinity is the same, the lengths L_X and L_Y of the two telescopes (length of a telescope is defined as the distance between the objective lens and the eyepiece) must be in the ratio

$$L_X/L_Y =$$

- (a) $\frac{2M+1}{2M-1}$
- (b) $\frac{2M-1}{M+1}$
- (c) $\frac{M-1}{M+1}$
- (d) $\frac{M+1}{M-1}$

Q36. [TIFR_2014_A_Q18]

Year 2014 · Optics · Ray Optics · Both int. phd and phd · 3 marks

TIFR GS	2014	Section A
---------	------	-----------

A lens can be constructed using a flat circular glass plate whose refractive index n varies radially, i.e. $n = n(r)$, where r is the radial distance from the centre of the plate. In order to make a convex lens by this method $n(r)$ should vary (in terms of positive constants $n(0)$ and α) as

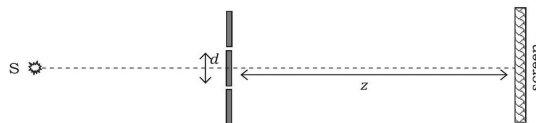
- (a) $n(0) - \alpha/r^2$
- (b) $n(0) - \alpha r^2$
- (c) $n(0) - \alpha r$
- (d) $n(0) - \alpha/r$

Q37. [TIFR_2014_A_Q21]

Year 2014 · Optics · Interference · Both int. phd and phd · 3 marks

TIFR GS	2014	Section A
---------	------	-----------

In a laboratory, the double-slit experiment is performed with free nonrelativistic electrons, each having energy E , emitted from a source S (see figure below). The screen consists of a uniform sheet of charge-sensitive pixels of size r . If the slit-screen distance is Z and the spacing between slits is d , which of the following restrictions on the electron energy E should be satisfied so that the fringes can be distinctly observed?



- (a) $E \geq \frac{1}{2m_e} \left(\frac{hZ}{rd}\right)^2$
- (b) $E \leq \frac{1}{2m_e} \left(\frac{hZ}{rd}\right)^2$
- (c) $E \leq c \left(\frac{hZ}{rd}\right)$
- (d) $E \geq c \left(\frac{hZ}{rd}\right)$

Q38. [TIFR_2014_B_Q37]

Year 2014 · Optics · Interference · Only int. Phd · 5 marks

TIFR GS	2014	Section B
---------	------	-----------

A glass plate P (refractive index $n_P = 1.54$) is coated with a dielectric material C with the refractive index $n_C = 1.6$. In order to have enhanced reflection from this coated glass for near-normal incident light of wavelength λ , the thickness of the coating material C must be

- (a) even multiples of $\lambda/2n_C$
- (b) even multiples of $\lambda/4n_C$
- (c) odd multiples of $\lambda/4n_C$
- (d) integral multiples of $\lambda/4n_C$

Quantum Mechanics**Q39.** [TIFR_2014_A_Q10]

Year 2014 · Quantum Mechanics · Basic Quantum Mechanics · Both int. phd and phd · 3 marks

TIFR GS	2014	Section A
---------	------	-----------

A particle moving in one dimension has the un-normalised wave function

$$\psi(x) = x \exp\left(-\frac{x^2}{\lambda^2}\right)$$

where λ is a real constant. The expectation value of its momentum is $\langle p \rangle =$

- (a) $\frac{\hbar}{\lambda} \exp\left(-\frac{x^2}{\lambda^2}\right)$
- (b) $\frac{\hbar^2}{\lambda^2} - 2\frac{\hbar}{\lambda}$
- (c) $\frac{\hbar}{\lambda} \exp(-1)$
- (d) zero

Q40. [TIFR_2014_A_Q11]

Year 2014 · Quantum Mechanics · Perturbation theory · Both int. phd and phd · 3 marks

TIFR GS	2014	Section A
---------	------	-----------

A particle of mass m and charge e is in the ground state of a one-dimensional harmonic oscillator potential in the presence of a uniform external electric field E . The total potential felt by the particle is

$$V(x) = \frac{1}{2}kx^2 - eEx$$

If the electric field is suddenly switched off, then the particle will

- (a) make a transition to any harmonic oscillator state with $x = -eE/k$ as origin without emitting any photon.
- (b) make a transition to any harmonic oscillator state with $x = 0$ as origin and absorb a photon.
- (c) settle into the harmonic oscillator ground state with $x = 0$ as origin after absorbing a photon.
- (d) oscillate back and forth with initial amplitude eE/k , emitting multiple photons as it does so.

Q41. [TIFR_2014_A_Q12]

Year 2014 · Quantum Mechanics · Angular Momentum and Hydrogen atom · Both int. phd and phd · 3 marks

TIFR GS	2014	Section A
---------	------	-----------

Consider the Hamiltonian

$$H = f\vec{\sigma} \cdot \vec{x}$$

Here \vec{x} is the position vector, f is a constant and $\vec{\sigma} = (\sigma_x, \sigma_y, \sigma_z)$, where $\sigma_x, \sigma_y, \sigma_z$ are the three Pauli matrices. The energy eigenvalues are

- (a) $f(\sqrt{x^2 + y^2} \pm z)$
- (b) $\pm f\sqrt{x^2 + y^2 + z^2}$
- (c) $\pm f(x + y + z)$
- (d) $f(x \pm iy)$

Q42. [TIFR_2014_B_Q31]

Year 2014 · Quantum Mechanics · Angular Momentum and Hydrogen atom · Only int. Phd · 5 marks

TIFR GS	2014	Section B
---------	------	-----------

A rigid rotator is in a quantum state described by the wavefunction

$$\psi(\theta, \varphi) = \sqrt{\frac{3}{4\pi}} \sin \theta \sin \varphi$$

where θ and φ are the usual polar angles. If two successive measurements of L_Z are made on this rotator, the probability that the second measurement will yield the value $+\hbar$ is

- (a) negligible
- (b) 0.25
- (c) 0.33
- (d) 0.5

Q43. [TIFR_2014_B_Q32]

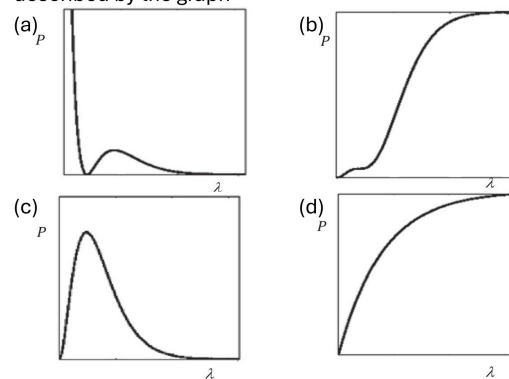
Year 2014 · Quantum Mechanics · Angular Momentum and Hydrogen atom · Only int. Phd · 5 marks

TIFR GS	2014	Section B
---------	------	-----------

A particle in the $2s$ state of hydrogen has the wave function

$$\psi_{2s}(r) = \frac{1}{4\sqrt{2}\pi} \left(\frac{1}{a_0}\right)^{3/2} \left(2 - \frac{r}{a_0}\right) \exp\left(-\frac{r}{2a_0}\right)$$

where r is the radial coordinate w.r.t. the nucleus as origin and a_0 is the Bohr radius. The probability P of finding the electron somewhere inside a sphere of radius λa_0 centred at the nucleus, is best described by the graph

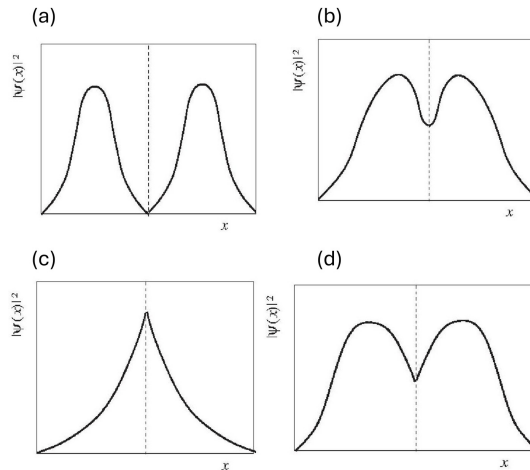


Q44. [TIFR_2014_C_Q46]

Year 2014 · Quantum Mechanics · Potential Well · Only PhD · 5 marks

TIFR GS	2014	Section C
---------	------	-----------

A particle is confined to a one-dimensional box of length L . If a vanishingly thin but strongly repulsive partition is introduced in the exact centre of the box, and the particle is allowed to come to its ground state, then the probability density for finding the particle will appear as



Q45. [TIFR_2014_C_Q47]

Year 2014 · Quantum Mechanics · Angular Momentum and Hydrogen atom · Only PhD · 5 marks

TIFR GS	2014	Section C
---------	------	-----------

A spin-2 nucleus absorbs a spin- $\frac{1}{2}$ electron and is then observed to decay to a stable nucleus in two stages, recoiling against an emitted invisible particle in the first stage and against an emitted spin-1 photons in the second stage. If the stable nucleus is spinless, then the set of all possible spin values of the invisible particle is

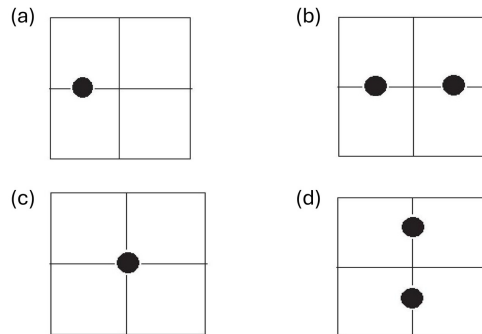
- (a) $\{1/2, 3/2, 5/2, 7/2\}$
- (b) $\{3/2, 7/2\}$
- (c) $\{1/2, 3/2, 5/2\}$
- (d) $\{1/2, 5/2\}$

Q46. [TIFR_2014_C_Q49]

Year 2014 · Quantum Mechanics · Angular Momentum and Hydrogen atom · Only PhD · 5 marks

TIFR GS	2014	Section C
---------	------	-----------

In a Stern-Gerlach experiment with spin $-\frac{1}{2}$ particles, the beam is found to form two spots on the screen, one directly above the other. The experimenter now makes a hole in the screen at the position of the upper spot. The particles that go through this hole are then passed through another Stern-Gerlach apparatus but with its magnets rotated by 90 degrees counterclockwise about the axis of the beam direction. Which of the following shows what happens on the second screen?



Solid State Physics

Q47. [TIFR_2014_A_Q19]

Year 2014 · Solid State Physics · Superconductivity and magnetic properties · Both int. phd and phd · 3 marks

TIFR GS	2014	Section A
---------	------	-----------

A solid sample has the property that, when cooled below a certain temperature, it expels any small applied magnetic field from within the material. Which of the following best describes this sample in the cooled state?

- (a) Ferromagnet
- (b) Anti-ferromagnet
- (c) Diamagnet
- (d) Paramagnet

Q48. [TIFR_2014_B_Q36]

Year 2014 · Solid State Physics · Semiconductor Physics · Only int. Phd · 5 marks

TIFR GS	2014	Section B
---------	------	-----------

For a pure germanium semiconductor cooled in liquid nitrogen, the average density of conduction electrons is about $n = 10^{12}$ per cm^3 . At this temperature the electron and hole mobilities are equal and have the common value $\mu = 5.0 \times 10^3 \text{ cm}^2 \text{ V}^{-1} \text{ s}^{-1}$. If a potential of 100 V is applied across a 1 cm cube of this cooled germanium sample, the current observed can be estimated as

- (a) $80 \mu \text{ A}$
- (b) 16 A
- (c) 16 mA
- (d) 160 mA

Q49. [TIFR_2014_C_Q51]

Year 2014 · Solid State Physics · Lattice Vibrations and Thermal Properties · Only PhD · 5 marks

TIFR GS	2014	Section C
---------	------	-----------

Which of the following statement best explains why the specific heat of electrons in metals is much smaller than that expected in a non-interacting (free) electron gas model?

- (a) The mass of electron is much smaller than that of the ions in the crystal.
- (b) Electrons in a metal cannot be modelled as non-interacting.
- (c) Electron spin can take only two different values.
- (d) The Pauli exclusion principle restricts the number of electrons which can absorb thermal energy.

Statistical Mechanics

Q50. [TIFR_2014_C_Q48]

Year 2014 · Statistical Mechanics · Quantum Stat. Mech. · Only PhD · 5 marks

TIFR GS	2014	Section C
---------	------	-----------

A gas of photons is enclosed in a container of fixed volume at an absolute temperature T . Noting that the photon is a massless particle (i.e., its energy and momentum are related by $E = pc$), the number of photons in the container will vary as

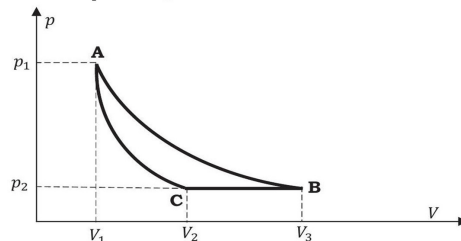
- (a) T^3
- (b) T
- (c) T^2
- (d) T^4

Thermodynamics**Q51.** [TIFR_2014_A_Q13]

Year 2014 · Thermodynamics · Carnot Cycle · Both int. phd and phd · 3 marks

TIFR GS	2014	Section A
---------	------	-----------

One mole of an ideal gas undergoes the cycle ACBA shown in the pV diagram below.



One of the curved lines in the cycle represents an isothermal change at temperature T , while the other represents an adiabatic change. The net heat gained by the gas in this cycle is

- (a) $-p_2(V_3 - V_2) + RT \ln \frac{V_3}{V_1}$
- (b) $-p_2(V_3 - V_2) + RT \ln \frac{V_2}{V_1}$
- (c) $-p_2(V_3 - V_2) + \gamma RT (V_2^{1-\gamma} - V_1^{1-\gamma})$
- (d) $(p_1 V_1 - p_2 V_2) - RT \ln \frac{V_3}{V_1}$

Q52. [TIFR_2014_A_Q14]

Year 2014 · Thermodynamics · Kinetic Theory of Gases · Both int. phd and phd · 3 marks

TIFR GS	2014	Section A
---------	------	-----------

An ideal gas at a temperature T is enclosed in a rigid container whose walls are initially at temperature T_1 , where $T_1 < T$. The walls are covered on the outside with perfect thermal insulation and the system is allowed to come to equilibrium. The pressure exerted by the gas on the walls of the container

- (a) remains constant throughout.
- (b) is lower at the initial stage than at the final stage.
- (c) is higher at the initial stage than at the final stage.
- (d) is the same at the initial and final stages.

Q53. [TIFR_2014_A_Q15]

Year 2014 · Thermodynamics · Kinetic Theory of Gases · Both int. phd and phd · 3 marks

TIFR GS	2014	Section A
---------	------	-----------

Consider the CO molecule as a system of two point particles which has both translational and rotational degrees of freedom. Using classical statistical mechanics, the molar specific heat C_V of CO gas is given in terms of the Boltzmann constant k_B by

- (a) $\frac{5}{2} k_B$
- (b) $2k_B$
- (c) $\frac{3}{2} k_B$
- (d) $\frac{1}{2} k_B$

Q54. [TIFR_2014_B_Q33]

Year 2014 · Thermodynamics · Laws of thermodynamics · Only int. Phd · 5 marks

TIFR GS	2014	Section B
---------	------	-----------

A thermally-insulated container of volume V_0 is divided into two equal halves by a non-permeable partition. A real gas with equation of state

$$b^3 \left(p + \frac{a^2}{V^3} \right) = nRT$$

where a and b are constants, is confined to one of these halves at a temperature T_0 . The partition is now removed suddenly and the gas is allowed to expand to fill the entire container. The final temperature of the gas, in terms of its specific heat C_V , will be

- (a) $T_0 + \frac{3a^2}{2C_V V_0^2}$
- (b) $T_0 - \frac{2a^2}{3C_V V_0^2}$
- (c) $T_0 - \frac{3a^2}{2C_V V_0^2}$
- (d) $T_0 + \frac{2a^2}{3C_V V_0^2}$

Q55. [TIFR_2014_B_Q34]

Year 2014 · Thermodynamics · Laws of thermodynamics · Only int. Phd · 5 marks

TIFR GS	2014	Section B
---------	------	-----------

A manufacturer is able to offer two models of heat-conserving windows, as described below.



Window A

Window B

Window A is a simple pane of glass, 4 mm thick. Window B, on the other hand, consists of two extremely thin panes of glass, separated by an air gap of 2 mm, as shown in the figure above. If the thermal conductivity of glass is known to be $0.8 \text{ Wm}^{-1} \text{ K}^{-1}$ and that of air is $0.025 \text{ Wm}^{-1} \text{ K}^{-1}$, then the ratio of heat flow Q_A through Window A to the heat flow Q_B through Window B is given by

$$\frac{Q_A}{Q_B} =$$

- (a) 4
- (b) 16
- (c) $\frac{1}{4}$
- (d) $\frac{1}{16}$

Answer Key & Index

Complete TIFR GS Physics Paper · 2014 · 55 questions

#	Question ID	Subject	Topic	Ans	Marks
1	TIFR_2014_C_Q50	Atomic and Molecular Physics	Effects in atomic physics	d	5
2	TIFR_2014_A_Q1	Classical Mechanics	Rotational Motion	a	3
3	TIFR_2014_A_Q16	Classical Mechanics	Special Theory of Relativity	c	3
4	TIFR_2014_A_Q2	Classical Mechanics	Basic Mechanics	d	3
5	TIFR_2014_A_Q3	Classical Mechanics	Rotational Motion	c	3
6	TIFR_2014_B_Q26	Classical Mechanics	Basic Mechanics	c	5
7	TIFR_2014_B_Q27	Classical Mechanics	Oscillations	c	5
8	TIFR_2014_B_Q40	Classical Mechanics	Special Theory of Relativity	a	5
9	TIFR_2014_C_Q43	Classical Mechanics	Pseudo Forces	a	5
10	TIFR_2014_A_Q7	Electromagnetism	Electrostatics	a	3
11	TIFR_2014_A_Q8	Electromagnetism	Electrostatics	b	3
12	TIFR_2014_A_Q9	Electromagnetism	Magnetostatics	c	3
13	TIFR_2014_B_Q29	Electromagnetism	Multipole Expansion	a	5
14	TIFR_2014_B_Q30	Electromagnetism	Electrostatics	b	5
15	TIFR_2014_C_Q44	Electromagnetism	Electrostatics	c	5
16	TIFR_2014_C_Q45	Electromagnetism	Radiations	b	5
17	TIFR_2014_A_Q23	Electronics	Diodes	a	3
18	TIFR_2014_A_Q24	Electronics	OPAMP	d	3
19	TIFR_2014_A_Q25	Electronics	Logic Gates	b	3
20	TIFR_2014_B_Q38	Electronics	AC and DC Circuits	d	5
21	TIFR_2014_B_Q35	Experimental Physics	Experimental design	a	5
22	TIFR_2014_B_Q39	Experimental Physics	Experimental design	b	5
23	TIFR_2014_C_Q54	Experimental Physics	Experimental design	a	5
24	TIFR_2014_A_Q4	Mathematical Physics	Matrices	b	3
25	TIFR_2014_A_Q5	Mathematical Physics	Fourier and Laplace Analysis	c	3
26	TIFR_2014_A_Q6	Mathematical Physics	Probability	d	3
27	TIFR_2014_B_Q28	Mathematical Physics	Delta, Gamma, Beta and Integra	a	5
28	TIFR_2014_C_Q41	Mathematical Physics	Complex Analysis	c	5
29	TIFR_2014_C_Q42	Mathematical Physics	Differential Equations	d	5
30	TIFR_2014_A_Q20	Modern Physics	Light Matter interaction	a	3
31	TIFR_2014_A_Q22	Nuclear and Particle Physics	Radioactivity	c	3
32	TIFR_2014_C_Q52	Nuclear and Particle Physics	Accelerator and Detectors	c	5
33	TIFR_2014_C_Q53	Nuclear and Particle Physics	Radioactivity	b	5
34	TIFR_2014_C_Q55	Nuclear and Particle Physics	Particle Physics	c	5
35	TIFR_2014_A_Q17	Optics	Ray Optics	d	3
36	TIFR_2014_A_Q18	Optics	Ray Optics	b	3

#	Question ID	Subject	Topic	Ans	Marks
37	TIFR_2014_A_Q21	Optics	Interference	b	3
38	TIFR_2014_B_Q37	Optics	Interference	c	5
39	TIFR_2014_A_Q10	Quantum Mechanics	Basic Quantum Mechanics	d	3
40	TIFR_2014_A_Q11	Quantum Mechanics	Perturbation theory	b	3
41	TIFR_2014_A_Q12	Quantum Mechanics	Angular Momentum and Hydrogen	b	3
42	TIFR_2014_B_Q31	Quantum Mechanics	Angular Momentum and Hydrogen	d	5
43	TIFR_2014_B_Q32	Quantum Mechanics	Angular Momentum and Hydrogen	b	5
44	TIFR_2014_C_Q46	Quantum Mechanics	Potential Well	d	5
45	TIFR_2014_C_Q47	Quantum Mechanics	Angular Momentum and Hydrogen	a	5
46	TIFR_2014_C_Q49	Quantum Mechanics	Angular Momentum and Hydrogen	b	5
47	TIFR_2014_A_Q19	Solid State Physics	Superconductivity and magnetic	c	3
48	TIFR_2014_B_Q36	Solid State Physics	Semiconductor Physics	d	5
49	TIFR_2014_C_Q51	Solid State Physics	Lattice Vibrations and Thermal	d	5
50	TIFR_2014_C_Q48	Statistical Mechanics	Quantum Stat. Mech.	a	5
51	TIFR_2014_A_Q13	Thermodynamics	Carnot Cycle	a	3
52	TIFR_2014_A_Q14	Thermodynamics	Kinetic Theory of Gases	c	3
53	TIFR_2014_A_Q15	Thermodynamics	Kinetic Theory of Gases	a	3
54	TIFR_2014_B_Q33	Thermodynamics	Laws of thermodynamics	c	5
55	TIFR_2014_B_Q34	Thermodynamics	Laws of thermodynamics	b	5

Practice these questions in test mode at physicspyq.com · Join Aaryan Sir's full TIFR Physics course at physicsbyaaryan.com